

ZING LASERS



ZING16

Small-size, entry-level laser system that is perfect for starting a business or to operate out of your home, office or school.

- 30 or 40 watt CO₂ laser
- 16" x 12" x 4.5" (406 x 305 x 114 mm) work area
- Affordable pricing for the entry-level user



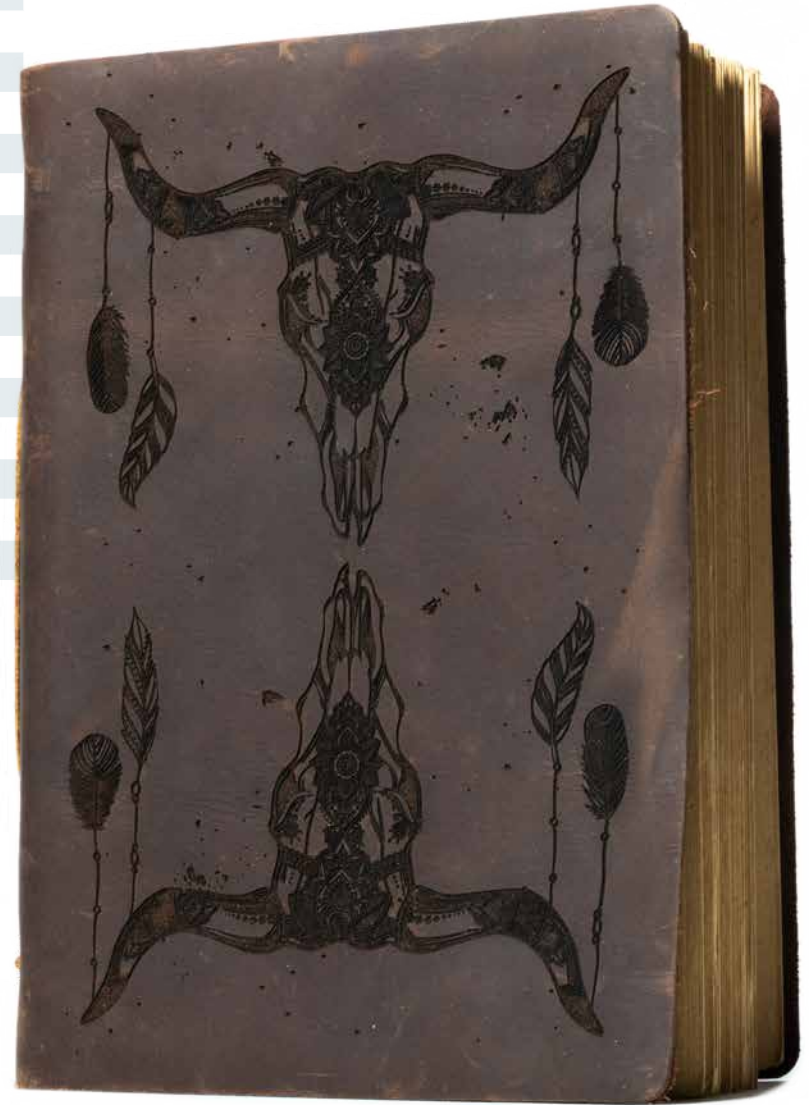
ZING 24

Larger work area and more features make this laser an affordable choice for those needing more features than an entry-level machine.

- 30, 40, 50 or 60 watt CO₂ laser
- 24" x 12" x 7.75" (610 x 305 x 197 mm) work area
- Compatible with the Rotary Attachment
- Radiance™ Beam-Enhancing Optics for a smaller laser spot size across the table

System Features

	Zing 16	Zing 24
Made-in-the-USA Quality: Designed, engineered & built in Golden, CO	•	•
Epilog Job Manager: Management & workflow software - easily organize, edit, save & print	•	•
Laser Dashboard™: Our print driver to choose from many engraving features	•	•
CO2 Waveguide Laser Tubes: Long-lasting, metal/ceramic tubes for highest engraving quality	•	•
Lenses Rated to 500 Watts: Highest-quality lenses provide long life & higher resolutions	•	•
High-Speed Stepper Motors: Faster stepper motors that provide high-resolution engraving	•	•
3D & Stamp Engraving Settings: Etch & cut stamps or create 3D curves while engraving	•	•
Super-Silent™ Cooling Fans: Quiet operation suitable for office environments	•	•
Air Assist: Remove heat & combustible gases from the cutting surface	•	•
Raster/Vector Color Mapping: Change your speed & power by using color settings	•	•
Networking Choices: USB & Ethernet connections, or connect wirelessly with a router	•	•
Moveable Home Position: Engrave odd-shaped items easily by setting a new home position	•	•
Red Dot Pointer: Provides a visible laser beam to help position projects	•	•
Easy-Access Drop-Down Door: Front access door for the laser system		•
Radiance™ Beam-Enhancing Optics: Higher-resolution optics for detailed engraving		•
Rotary Attachment Compatibility: Engrave cylindrical objects with the optional rotary		•



TECH SPECS

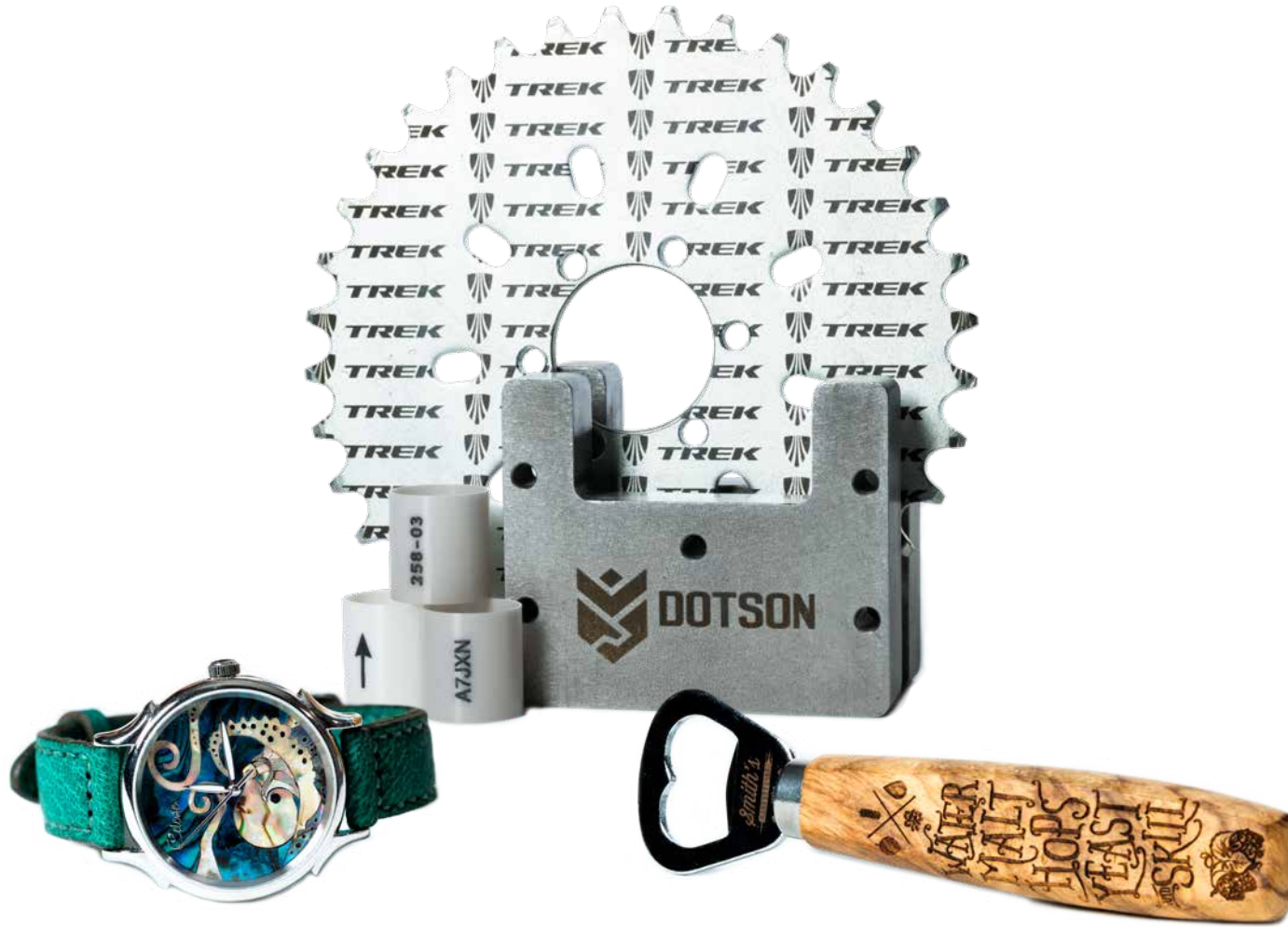


Mini 18



Mini 24

Work Area	18"x12" (457x305mm)	24"x12" (610x305mm)
Max Material Thickness	4" (102mm). Remove table for 6" (152mm) depth & 17.5"x10" (444x254mm) work area	5.5" (140mm). Remove table for 8" (203mm) depth & 23.5"x 11.75" (597x298mm) work area
Laser Tube Wattages	30 & 40 watt, CO ₂ , air-cooled, metal Waveguide tube, 10.6 micrometers	30, 40, 50, & 60 watt, CO ₂ , air-cooled, metal Waveguide tube, 10.6 micrometers
Software		
Memory		
Modes		
Motion Control	High-speed, continuous-loop, DC servo motors using linear and rotary encoding technology for precise positioning	
X-Axis Bearings	Ground & polished stainless steel long-lasting bearing system	
Belts	Advanced B-style double-wide Kevlar precision drive belts	
Resolution	User-controlled 75-1200dpi	
Speed & Power	Computer-controlled speed & power in 1% increments up to 100%. Color mapping feature links Speed, Power, Frequency, Raster/Vector mode, & Air Assist On/Off settings to any RGB color	
Print Interface		
Size (W x D x H)	27.8"x26"x13.5" (706x660x343mm)	34.5"x26"x16" (876x660x406mm)
Weight	70lbs (32kg)-100lbs (45.5kg) with stand	90lbs (41kg)-120lbs (55kg) with stand
Electrical		
Ventilation System	Required. One output port, 4" (102mm) in diameter	
Class		



Authorized distributor



NAMSON TECHNOLOGY - ENGINEERING CO., LTD
Address: 51-53 Pho Quang Street, Ward 2, Tan Binh District, Ho Chi Minh City, Vietnam
Hotline: 0909 961 715
Tel: (028) 3997 4421

HANOI BRANCH
Address: 3B, Alley 43, Giang Vo Street, Cat Linh Ward, Dong Da District, Hanoi, Vietnam
Tel: (024) 3736 8377
www.namson.com.vn

