



Key benefits and features

A true OEM Fiber Laser allowing machine builders to offer leading edge high reliability Fiber Laser based cutting and welding machines maintaining their own brand throughout. We are a vertically integrated manufacturer of Fiber Laser sources. By offering only the "Laser engine" we allow machine builders who do not have "in-house" Fiber Laser manufacturing capability to compete equally with those who do. The unique offering of up to 1.5kW in a single unit allows compact machine design with minimal installation time. Taking advantage of 60 years' experience, these Laser modules combine single mode beam quality, high reliability, high efficiency and fast modulation capability with easy install features.

Full Feature List

- Single modules of up to 1.5kW output power.
- Patented back reflection protection.
- Simple integration into existing equipment.
- Field replaceable delivery fiber.
- Process monitoring capability via back reflected radiation signal.
- Extremely compact design.
- Rack mount 19" format.
- Optional integrated pulse shaping capability.
- High frequency modulation capability.

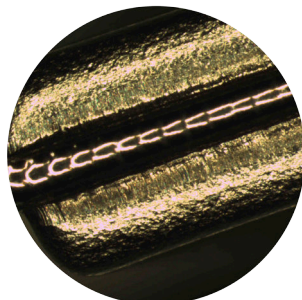
Optimised for...

High volume OEMs' who want to:

- Tightly integrate the Fiber Laser within their overall system design.
- Provide 100% of the machine and Laser service to their customers.
- Build their own systems to order, combining individual modules as required.



Thick Metal Cutting
 Mild Steel, Stainless Steel,
 Aluminium



Welding
 Stainless Steel



Cutting
 Copper, Brass,
 Aluminium

PRISM concept overview

With up to 1.5kW of output power and three output fiber options delivering M² of <1.1, 6.5 or 10 make these units extremely versatile. The units are 19" rack mount compatible and can be installed within Laser processing machines rather than as a separate cabinet, meaning only the integrator's brand name is visible to an end user. The System Integrator adds value to these modules by providing the DC power supply, a suitable enclosure with environmental control where necessary, a temperature controlled coolant supply and system level safety control.

www.spilasers.com/support

© SPI Lasers UK Ltd

SM-S00470-2

Benefits

- Lowest cost Laser for high volume manufacturers
- Opportunity for OEMs' to add value. More than a Laser reseller
- We offer OEMs' training for field servicing of modules (including delivery fiber)
- High stability, repeatability & reliability

Key Features

- 300W, 500W, 750W, 1kW & 1.5kW Output
- Single mode and multimode fiber delivery options
- Patented back reflection protection in industry standard QBH compatible fiber connector
- In process feedback
- 19" Rack modular design
- Optional integral pulse shaping capability
- High frequency modulation

Applications

- Additive Manufacturing
- Thick Sheet Cutting
- Fast Thin Sheet Cutting
- High Speed Welding
- Remote Welding
- Cladding

Industries

- Automotive
- Advanced Manufacturing
- Flat Sheet Cutting
- General Fabrication

Go to spilasers.com/products for information on accessories, extended warranties and longer beam delivery optic lengths.

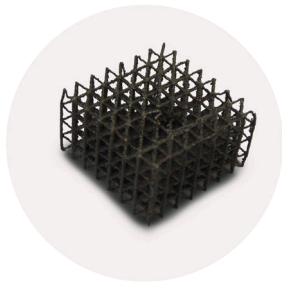
Product Selection Parameters

Model	300W	500W	750W	1kW	1.5kW
Performance Data					
Operating Modes	CW and Modulated				
Output Power Range	10 – 105%				
Long Term Output Power Stability ⁽¹⁾	± 2% peak				
Wavelength (nm)	1080				
Linewidth (nm)	<10				
Polarisation	Un-polarised				
Min. Rise / Fall Time (µs)	<5				
Max. Modulation Frequency (kHz)	70			50	
Fiber Optic Beam Delivery					
20µm Fiber, M ² : ≤1.3	✓	✓	✓	✓	✓
50µm Fiber, 2.2mm mrad BPP ⁽²⁾	✓	✓	✓	✓	✓
100µm Fiber, 3.5mm mrad BPP ⁽²⁾	✓	✓	✓	✓	✓
Alignment Laser Wavelength (nm)	630-680 (Class 2)				
Electrical					
Voltage	48V DC				
Max. Power Consumption (kW)	1.1	1.8	2.7	3.6	5.4
Current (A)	23	38	56	75	112
Environment / Cooling					
Ambient Temperature (°C)	5-45				
Coolant Flow Rate (litre/min) ⁽³⁾	3	5	8	10	15
Coolant Connections	10mm				
Max. Relative Humidity	85% (20°), 50% (40°C)				
Module Dimensions					
Height	2U				
Width	19" rack mount (445mm)				
Depth	550mm				702mm

Notes
 1. Constant Temperature
 2. Beam Parameter Product = beam radius x half angle divergence
 3. At Maximum 30°C Temperature

Terms and conditions
 Some specific combinations of product specifications and optional accessory may not be available. These Lasers are designed as units for incorporation or integration into other equipment. All product information is believed to be accurate and subject to change without notice. A complete product specification will be issued on request and also at time of order acknowledgement. The user assumes all risks and liability whatsoever in connection with the use of the product or its application.

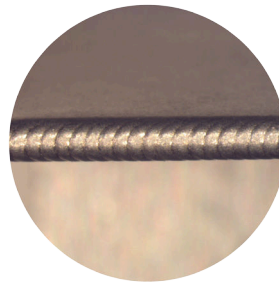
Applications



3D Printing / Additive Manufacturing
Metal Powders



Cutting
Brass, Aluminium, Copper, Mild Steel & Stainless Steel



Welding
Stainless Steel



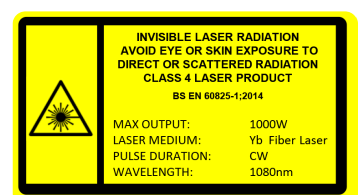
Cutting
Mild Steel

Distributed by:
NAMSON TECHNOLOGY - ENGINEERING CO., LTD



HEAD OFFICE
 Add: 51 - 53 Pho Quang Str, Ward 2, Tan Binh Dist, Ho Chi Minh City, Vietnam.
 Tel: +84 8 3997.4421 - Fax: +84 8 3997.4423
 E-mail: info@namson.com.vn - Website: www.namson.com.vn

BRANCH
 Add: No.3B, Lance 43, Giang Vo Str, Cat Linh Ward, Dong Da Dist, Ha Noi
 Tel: +84 4 37 36 83 77



www.spilasers.com/support
 © SPI Lasers UK Ltd
SM-S00470-2